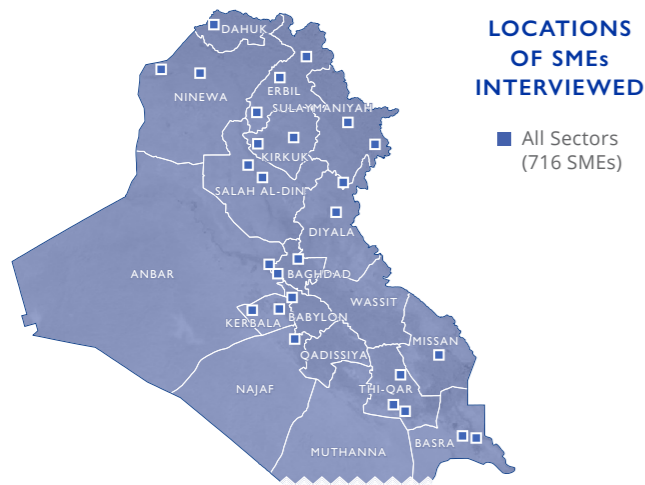


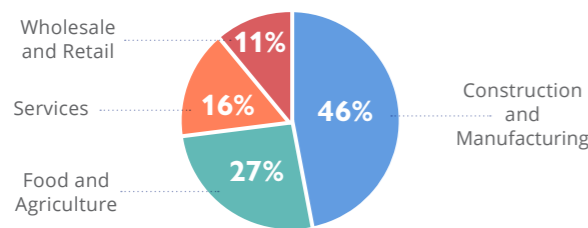
Panel Study IV: Impact of COVID-19 on SMEs in Iraq

For more information: iomiraq@iom.int
© 2021 International Organization for Migration (IOM)

SME Breakdown



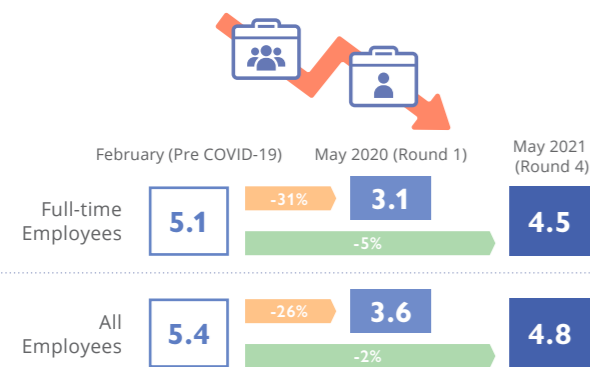
SMEs INTERVIEWED BY SECTOR



Job Loss

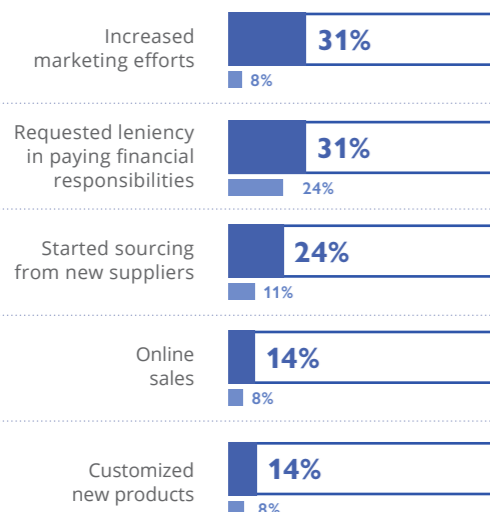
ROUND 4 (JUNE 2021) | ROUND 1 (JUNE 2020)

AVERAGE NUMBER OF EMPLOYEES



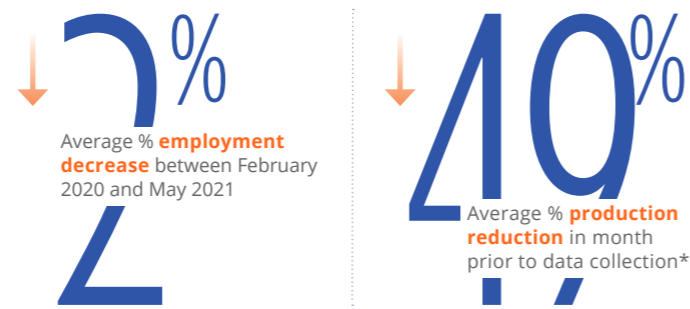
Note: Percent change is calculated by averaging the percentage changes of each SME between each round and before COVID-19, which may differ from the percentage change between the two averages shown.

AS A RESULT OF COVID-19



Note: Multi-select question

Main Findings



* Average percentage reduction in production among the SMEs that reported that their production was negatively affected (459)

Losses

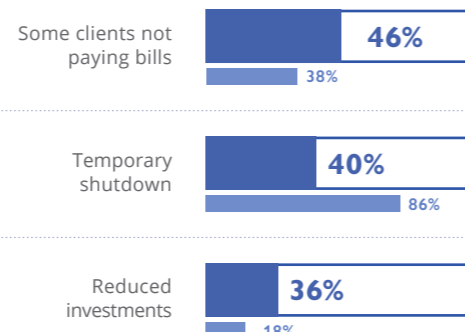
ROUND 4 (JUNE 2021) | ROUND 1 (JUNE 2020)

AVERAGE MONTHLY REVENUE



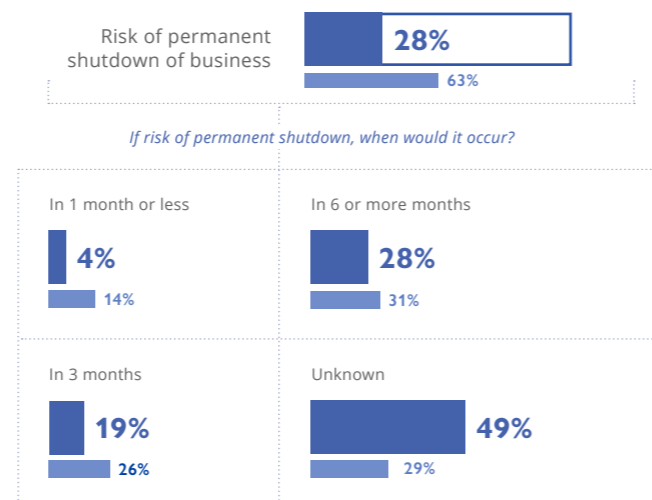
Note: Percent change is calculated by averaging the percentage changes of each SME, which may differ from the percentage change between the two averages shown. The standard deviation for February to May 2020 is .46 and from February 2020 to May 2021 is .58.

AS A RESULT OF COVID-19



Note: Top three answers of multi-select question

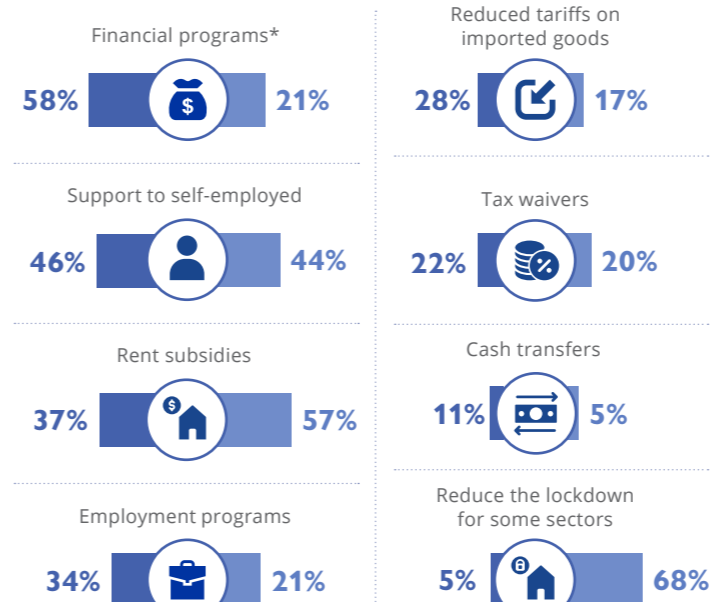
RISK OF CLOSURE OF SMEs



If risk of permanent shutdown, when would it occur?

Needs

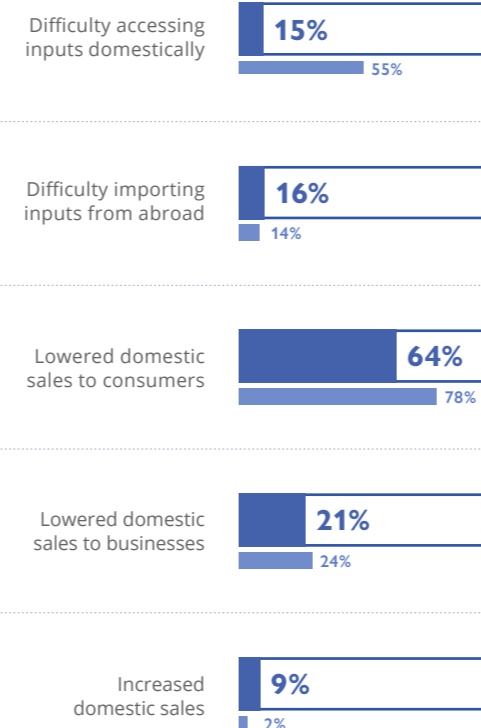
DESIRED COVID-19 GOVERNMENT SUPPORT



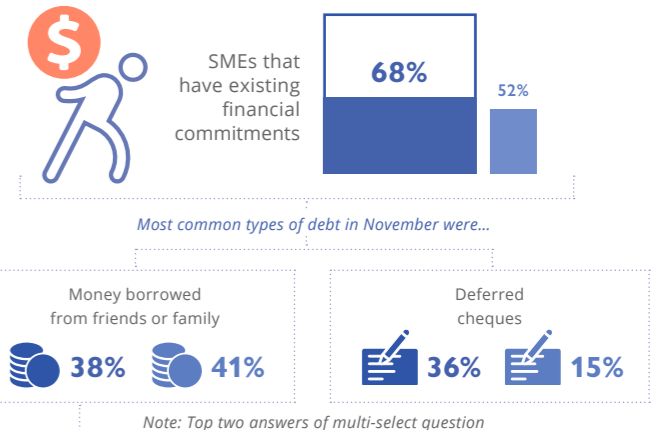
Note: Multi-select question
* Such as low interest credit lines or credit guarantees

Input and Raw Materials

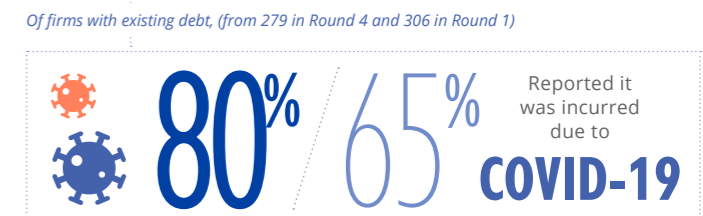
ABILITY TO PURCHASE INPUTS AND/OR SELL OUTPUTS



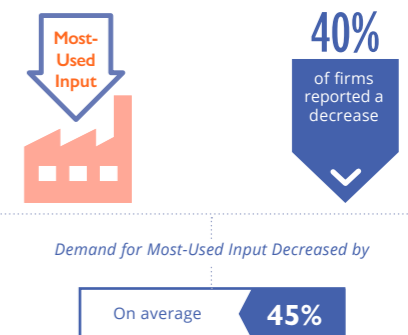
SMEs WITH DEBT



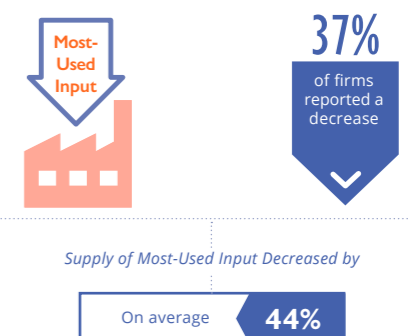
Note: Top two answers of multi-select question



DEMAND FOR MOST-USED INPUT COMPARED TO JUNE 2020



SUPPLY OF MOST-USED INPUT COMPARED TO JUNE 2020



Note: This question asked business owners if the supply and demand for the two most-used inputs of production increased, decreased, or stayed the same relative to this time last year. Most-used inputs vary widely by business.

About the Study

This assessment of 716 small and medium enterprises was jointly designed by the International Organization for Migration (IOM) Iraq, the Food and Agriculture Organization (FAO), and the International Trade Centre (ITC). The selection of respondents took place through a blocking design sample of Iraqi governorates from 2,236 firms registered in IOM databases, covering rural and urban areas. IOM field researchers completed in total four rounds of surveying over the phone with business owners. Round 1 took place from 22 June to 7 July 2020 and Round 4 took place from 8 to 24 June 2021. The questionnaire followed an informed consent protocol that offered respondents a description of the purpose of the survey and a chance to opt out. This study is funded by the European Union and the U.S. Department of State, Bureau of Population, Refugees, and Migration.