

NTFV Ethiopia by ITC-ALLIANCES FOR ACTION AND PARTNERS

Our programmes | our network | our projects



The International Trade Centre (ITC) is the joint agency of the World Trade Organization and the United Nations. ITC is the only development agency that is fully dedicated to supporting the internationalization of micro, small and medium-sized enterprises (MSMEs).

In Ethiopia, we represent selected ITC programmes and their partners.

Alliances for Action:

ITC's Alliances for Action programme initiative leverages partnerships for sustainable food systems. It does this through partnerships that cultivate ethical, climate-smart, sustainable agricultural value chains

We aim at achieving resilience and growth for farmers and MSMEs through more mindful and responsible trade, production and consumption systems and improved opportunities to compete on a global market.

Netherlands Trust Fund - Phase V (NTFV): Alliances for Agribusiness and Digital Technology

ITC's NTFV programme is designed to contribute to decent jobs and improved livelihoods in the agribusiness, agritech and digital technology sectors. Our programme includes both sectors in Ethiopia, Ghana, Senegal, and the digital technologies sector in a multi-country project in Benin, Cote d'Ivoire, Mali and Uganda. In Ethiopia, Ghana and Senegal, ITC's Alliances for Action Agribusiness is working with smallholder farmers and MSMEs focused on coffee, cocoa, cashew and associated crops.

The project, following Alliances for Action principles, is tackling all the coffee value chain from seed to cup. Main focus areas include:

- Digitalization (Connecting farmers to Agri-tech companies)
- In-country value addition, processing and roasting
- Income diversification
- Facilitating linkages for micro, small and medium-sized enterprises, social enterprises and producer associations with international, regional and domestic partners, business and investment opportunities
- Corporate Sustainability Due Diligence Directive (CS3D) adaptation





ITC partners with the Netherlands to support African agribusiness

While Ethiopia is a well-established coffee producer and exporter, its farmers still often struggle to make a decent living and bottlenecks persist in the sector. The project's overall objective is to contribute to decent jobs and improved livelihoods in Ethiopia's coffee sector. The expected outcome is the facilitation of value chain alliances that are more sustainable, resilient and inclusive and generate additional trade and investment for farmers and micro, small and medium-sized enterprises (MSMEs).

The NTF V Agribusiness project has been designed and will be implemented through the Alliances for Action (A4A) methodology, with the following objectives:

- Identify market opportunities and new buyers in the domestic, regional and international market for the coffee sector and associated crops.
- Strengthen public-private alliances to support the development of more solid ecosystems, including through digital applications.
- Build capacities of support institutions and stakeholders along the coffee value chain. That includes producers, MSMEs, and social enterprises.
- Facilitate linkages for SMEs, social enterprises and producer associations with international, regional and domestic partners, business and investment opportunities.

The Fairtrade Golden Cup Competition

The Fairtrade Golden Cup awards bring recognition - and new opportunities - to farmers who work hard to produce high-quality Fairtrade coffee. The Latin American and Caribbean Network of Fair Trade Small Producers and Workers (CLAC) hosts this competition across a range of countries with its regional partners and support from ITC's Alliances for Action programme. Recent Golden Cup editions in Brazil, Mexico, Peru and Ethiopia with Fairtrade Africa were a huge success.

The tournament contributes to the promotion of Fairtrade coffees in the specialty market, both at origin and in global markets. By promoting the opening of markets for Fairtrade coffee, it's possible to both add value to the product and promote ethical and sustainable production processes.





OUR PARTNERS

The Ethiopian Coffee and Tea Authority

The Ethiopian Coffee & Tea Authority is an institution formed under the mandate given by the Ethiopian Council of Ministers based on the declaration No.364/2008 through the infrastructure of the Ethiopian Ministry of Agriculture. It exists to support, guide, protect and empower the development of the Coffee, Tea and Spice industry through refined understanding, innovation and industrial excellence deserving to the unique natural asset of Ethiopia.

The Ethiopian Coffee Association

The Ethiopian Coffee Association (ECA) was founded in 1969 by major Ethiopian coffee exporters as a non-profit and major promoter of Ethiopian coffee in the international market. It represents Ethiopian coffee sector value chain actors, from smallholder coffee farmers to exporters. It is a member of SCA, AFCA, and SCAJ and counts Ethiopian smallholder and commercial coffee farmers, processors, roasters, and exporters amongst its 258 members.

ITC's flagship publication: The Coffee Guide, 4th Edition



The International Trade Centre (ITC), through its Alliances for Action initiative, has published the fourth edition of the world's most comprehensive, practical source for the international coffee trade, the Coffee Guide.

This fourth edition is directly informed by the coffee industry. It builds on collaboration with more than 70 coffee industry actors from across the globe and value chain. It explores issues the sector faces and charts a path towards a more sustainable future for the industry through targeted solutions.

The Coffee Guide, 4th Edition is available in English, Spanish, French, Portuguese, and Amharic.

Download the
Guide here:



ITC's publication and tool for a sustainable future:

Making mandatory human rights and environmental due diligence work for all

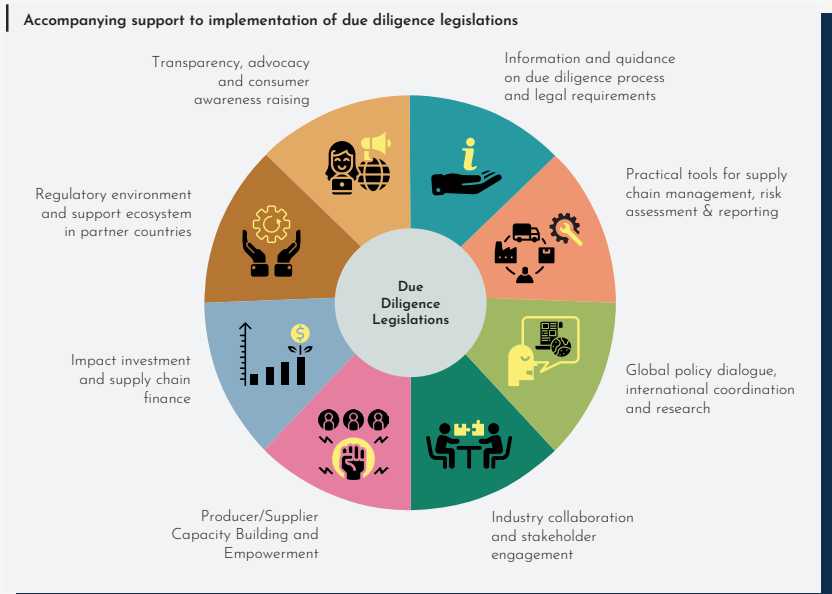
Highlights on effective and inclusive accompanying support to due diligence legislation

This publication was recently co-created and published by ITC and EU DG-INTPA. It brought together the combined experience of a panel of international organizations (EU, OECD, ILO, FAO, UNECE) while integrating the perspectives of consumer-facing companies in Europe and those of MSMEs, farmer cooperatives and business organizations from developing countries. The final objective is to propose accompanying measures that can enable sharing of mandatory human rights and environmental due diligence (“mHREDD”) responsibilities across value chain actors and avoid potential negative consequences for producing countries and MSMEs.

More info here:



This shift towards mandatory human rights and environmental due diligence raises the bar for responsible and sustainable business practice. Companies must identify the risks in their business footprint and be prepared to demonstrate that they took the appropriate steps to prevent, mitigate or resolve them - the so-called “know and show” requirement.





**ETHIOPIAN COFFEE PRODUCERS
& ROASTERS FROM ITC'S NETWORK**



Bench Maji Forest Coffee Producers Cooperative Union

Country/ region: Ethiopia, Bench Maji region.

Bench Maji Forest Coffee Producers Cooperative Union is a farmer-based organic coffee, spices and honey producer organization based in the Bench Sheko zone of south-western Ethiopia. The union was originally established in 2005 by 14 founding primary cooperatives, which united to commercialize their coffee and market their products internationally. The union is working by visioning to become the most competitive and leading farmers' cooperative union in Africa by producing and supplying high quantity and quality coffee, spice and honey products to international market. The union headquarter office is based in Bench Sheko zone Mizan Aman city and Export contact office is based in Addis Ababa, Debrezite road, Saris, Trans Ethiopia Tower 4th floor.

Story: Bench Maji Forest Coffee Producers Cooperative Union grew over time to an annual production of up to 1,920 tones green coffee with 63 primary cooperatives affiliated under the service of the union. Within the primary cooperative structures, the numbers of our individual farmer members are 14,170, where 20.3% are women. The women-only primary cooperative that is 'Kebrta Tigr Fre' makes the union unique at country-level by prioritizing support to women. We are also a certified Cooperative union with Fairtrade, Organic, Rainforest Alliance, UTZ and Café Practice.

COFFEE SPECS

Species: Arabica

Process: Washed and Natural

Altitude: 1,400-2,500 masl.

Screen size: 14

Volume: 1,920 MT

Grades: 1-3

Certifications: Fairtrade, Organic, Rainforest Alliance, UTZ and Café Practice

Representative: Netsanet Nega Nigussu

Contact: netsy.7nega@gmail.com | benchmajicoffeemarketing@gmail.com | +251 911 730 869

Website: www.benchmajicoffeeunion.com

Facebook: FB- Bench Maji Coffee Union



Kafa Forest Coffee Farmers' Cooperative Union

Country/ region: Kaffa Zone, Southwest Ethiopia.

Kafa Forest Coffee Farmers' Cooperative Union stands out with its naturally organic coffee, selection of wild-grown coffee from a multi layered upland rain forest, high product traceability and payment of dividends to its farmers from the net profits. It exports both natural (grade 1-5) and washed (grade 1 & 2) coffees to Germany, France, USA, Japan, Australia and Canada.

COFFEE SPECS:

Species: Coffee arabica

Process: Natural & Washed

Soil: Volcanic

Altitude: 1600-2200 masl.

Screen size: 14

Volume: Natural 520 MT, Washed 364 MT (2022/23 crop season plan)

Grades: Washed: 1&2 | Natural: 1, 2, 3, 4, 5

Certifications: Fairtrade: 21 cooperatives, Organic/Wild (EU & NOP): 20 cooperatives

Story: Kafa Forest Coffee Farmers' Cooperative Union is located in Kaffa zone, in the southwestern part of Ethiopia. It was established in 2004 by 17 primary cooperatives with 4,267 member farmers and a capital of 200 thousand ETB. Currently, the number of member cooperative societies has reached 57 with more than 17 thousand smallholder members (20% female) and its net capital has reached to over 20.7 million ETB. The main objective of its establishment is processing and marketing of coffee delivered by its member primary cooperative societies directly in the international coffee market so that farmers get a better price for their crops and improve their living standards. The union is playing its part in achieving a self-sufficient and market-oriented agricultural community with strong bargaining power and sustainable and competent marketing services targeting the international coffee market.

Representative: Getahun Frehiwet

Contact: kafaforestcoffee@gmail.com | Tel. +251 (0)11 4703396 | Mobile +251 (0)91 148 0794



Limmu Inara Multipurpose Cooperative Union

Country/ region: Ethiopia Oromia Jimma Limmu Kosa 02 kebele.

The Union has been expanding its role and visions by contributing existing efforts to transform the livelihoods of small-scale coffee farmers by coordinating, organizing and sensitizing the farmers on the production of sustainable, quality and specialty coffee supply to the world market.

Story: Limu Inara Farmers Multipurpose Cooperative Union was Established in February 2006 with Member of 11 Primary Cooperative with 3086 members. From this, 68 are women. Currently, the Union serves 108 primary cooperatives. 27 produce Organic, Fairtrade and Rainforest Alliance-certified coffee. In total, the union counts 36,716 members, of which 6,716 are women.

COFFEE SPECS

Species: Arabica

Process: Washed

Altitude: 1,700-2,000 masl

Screen size: 14 and 16

Volume: 1,200 MT

Certifications: Flo, Organic, FDA

Representative: Mohammed Miftahu Jemal
Contact: limu.inara@gmail.com | +251 917 006 059



Oromia Coffee Farmers Cooperatives Union

Country/ region: Ethiopia, Oromia region.

Oromia Coffee Farmer's Cooperative Union (OCFCU) aims to help small-scale coffee farmers to take advantage of the Fairtrade coffee market. OCFCU was established in order to help farmer families. OCFCU returns 70 percent of its net profits back to the cooperatives, and cooperatives back to members. Specifically, OCFCU focus on improving the farmers' income by exporting their coffee directly, improving the quality of services to member farmers and clients, improving the social condition of farmers, and improving the quality and productivity of Ethiopian coffee. Facilities owned and managed by the members of the union are warehouses, Coffee Processing Machines and office/buildings.

Story: Oromia Coffee Farmers Cooperative Union (OCFCU) is a smallholder coffee grower-owned cooperative union established on June 1, 1999, by 34 cooperatives with 22,691 farmers. Today, there are 407 cooperatives with over 586,186 members and \$12,456,000 capital. OCFCU is a Democratic member's owned business operating under the principles of the International Cooperative Alliance and fair trade. Members of the Oromia Coffee Farmers Cooperative Union are the growers, processors, and suppliers of high-quality, organic Arabica coffee for direct



COFFEE SPECS

Species: Arabica

Variety: Yirgacheffe, Gujii/Sidamo, Limu, Nekemte, Harar and Djimma

Process: Washed and Natural

Altitude: 1700 to 2200

Screen size: 14 and 15

Aroma: Blueberry, Citrus, Floral, Wine

Volume: 7,775 MT

Certifications: Organic NOP, EU, JAS, Fairtrade, RFA, CP, SPP and Bird-Friendly

export. The general objective of OCFCU is to export the farmers' coffee by passing the auction. OCFCU promotes fair trade for socially and environmentally sustainable techniques and long-term relationships between producers, traders, and consumers.

The OCFCU is now delivering energy-efficient stoves that have the potential to reduce firewood consumption, reduce indoor air pollution, improve the health of rural communities and generate carbon credits. This project is generating employment opportunities for women and youth in rural areas.

Representative: Dejene Dadi Dika

Contact: dejenedadi@oromiacoffeeunion.org | +251911226744

Website: www.oromiacoffeeunion.org



Torban Anfillo MP Farmers Cooperative Union

Country/ region: Ethiopia, Anfillo district

The Torban Anfillo MP Farmers Cooperative Union was founded in March 2006 with 3,986 farmers (3,964 men and 22 women), organized under 18 primary cooperatives (PCs) that operate in the Anfillo district of West Ethiopia. Currently, there are 10,614 members organized into 23 primary cooperatives. The Anfillo district's coffee-growing areas span more than 50 square kilometers and are home to all the member farmers.

Story: Anfillo district is known for producing Nekemte washed and sun-dried (natural) organic and Fairtrade certified Arabica coffee, which has a good fruity flavor grown under the natural forest. The Anfillo forest is also for beekeeping production, which has supplementary benefits for coffee production.

COFFEE SPECS

Species: Arabica

Process: Natural and Washed

Altitude: 1450-2500

Screen size: 14

Aroma: Fruity and caramel

Certifications: Organic EU/ NOP

Representative: Chimsa Yoseph Gutama

Contact: torbananfillo@gmail.com | +251911827695

Website: www.torbananfillo.com

Instagram: @anfillo_dawo_coffee_ethiopia



Yirgacheffe Coffee Farmers' Cooperative Union

Country/ region: Southern Ethiopia Gedeo zone.

Yirgacheffe Coffee Farmers Cooperatives Union (YCFCU) is a Fairtrade-certified coffee producers' union from the Gedeo zone of Southern Ethiopia. The union gathers 28 cooperatives with 45,036 member farmers. It has a coffee-processing facility and office in Addis Ababa which takes export-ready coffee to the market and liaison office at Dilla to support the cooperative and farmers. YCFCU has been exporting Yirgacheffe washed Grade

land 2, Yirgacheffe Natural Grade 1 and 3 and Yirgacheffe Roasted and ground coffee. The coffee is 100% organic.

Story: Yirgacheffe Coffee Farmers Cooperatives Union currently represents over 45,000 farmers and was established in June 2002. Its 28 member cooperatives are all located in Gedeo, Southern Ethiopia. This area is well-known and the Yirgacheffe is world renowned for its amazing, complex coffees - some say the best in the world. The 37,810-hectare gardens are dedicated to coffee alone and produce on average 20,000 tons of Yirgacheffe washed and sun dried coffee per year. YCFCU has rigorous operational systems in place on quality control, environmental sustainability and social responsibility - with Fairtrade premiums reinvested into their community of coffee growers.

COFFEE SPECS

Species: Arabica

Variety: Yirgacheffe

Altitude: 1850-2440

Process: Washed and natural

Screen size: 14

Tasting notes: Medium acidity, full body, cocoa, sweet almond and ripe berry flavors

Volume: 1536-2304 MT

Certifications: Organic and Fairtrade

Representative: Alehegn Tiba Maldie

Contact: alehegntiba@gmail.com | +251911392540

Website: www.yirgacheffeunion.com

Instagram: @yirgacheffecoffeeunion **Facebook:** Yirgacheffe Coffee Union

CONNECT WITH US

ITC is pleased to support coffee producers and entrepreneurs in Ethiopia and to help pave the way for new sustainable partnerships in the coffee sector.

If you wish to learn more about ITC's inclusive agribusiness projects and understand how to collaborate with us, please reach out to:

ITC programmes: Alliances for Action | ACP Business-Friendly | Netherland Trust Fund V

Cristina Reni

Email: creni@intracen.org

ITC Coffee Guide and Network:

Katherine Oglietti

Email: koglietti@intracen.org

